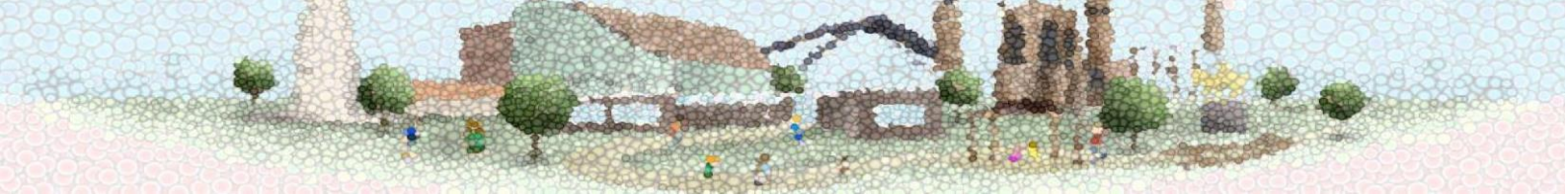


# Sherbourne Fields School Admission Arrangements



**SHERBOURNE  
FIELDS**



Pupils are admitted to the school after a request for a placement from the Local Authority. Pupils must have an EHCP but pupils can be admitted whilst this is in progress. (Assessment Placement)

Children and parents/carers are advised to visit the school prior to admission.

### [View Sherbourne Fields Prospectus](#)

The school currently offers 202 student places for students aged 4-19 years. Coventry Local Authority manages the admission of students to the school though parents and carers are welcome to visit the school to discuss suitability of placement. Oversubscriptions will also be dealt with by Coventry Local Authority. Most of our students are resident in Coventry but we also admit students from neighbouring local authorities – Warwickshire, Solihull etc,

**If you would like to visit the school to discuss suitability of placement please contact:**

- [office@sherbournefields.coventry.sch.uk](mailto:office@sherbournefields.coventry.sch.uk) 02476 591 501
- Shivaun Duffy Moriarty - Headteacher  
[smoriarty@sherbournefields.coventry.sch.uk](mailto:smoriarty@sherbournefields.coventry.sch.uk) 02476 591501
  
- Claire Antrobus - Deputy Headteacher  
[cantrobus@sherbournefields.coventry.sch.uk](mailto:cantrobus@sherbournefields.coventry.sch.uk) 02476 591501

Coventry Local Authority, SEN Management  
Services handle admission arrangements:  
SEN Management Services  
Civic Centre 2  
Earl Street ,Coventry, CV1 5RS 024  
7683 1614.  
Email: [SEN@coventry.gcsx.gov.uk](mailto:SEN@coventry.gcsx.gov.uk)

|  |   |
|--|---|
|  | <a href="http://www.sherbournefields.co.uk">www.sherbournefields.co.uk</a>            |
|  | <a href="https://www.facebook.com/SherbourneFieldsSchool">@SherbourneFieldsSchool</a> |
|  | <a href="https://twitter.com/Sherbournetweet">@Sherbournetweet</a>                    |